



REDeye Passive infrared solutions for the covert identification of personnel, vehicles and equipment

REDeye products transmit a high intensity infrared reflective signature with an IR transmission value of > 70% at 835nm. Using an IR capable PVS-14 night vision device items in the REDeye@product range can be identified at over 800 metres. Tactical infrared identity products are customised to meet the specific construction, IR performance and visual signature requirements of our military, security and police clients worldwide.

DUAL I.D. CALL SIGNS

Dual ID Infrared badges are designed to show two different images, one in daylight one when viewed with IR compatible night vision devices. i.e. Dutch flag in daylight, callsign with IR image.

COVERT

Magnifying Anti-glare (MAG) surface component reduces stray visible light reflection and increase stage one infrared response levels by 32%.

DISTINCT

Optical patterning technique allows for impressive daylight appearance while maintaining full infrared response, and can be tailored to suit all operations needs.

STEALTH

Infrared transmission components blocks all visible light, allowing only the transmission and reflection of over 90% of near infrared light at 825nm

INTENSE

High grade IR performance from base layer marine grade micro-prism reflective elements, having over 80 candela/lux/m². Retro-reflective performance . Viewable over 2 km.

SECURE

An ASTM D4956 approved adhesive layer bonds IR components to a Power Hook profile providing maximum strength and security when used with fixed hook and loop garment systems.

DURABLE

Resistant to most extreme flex peel and shear stress conditions found in a tactical field environment. Peel strength 9.4kg/50mm and shear strength 53.5/50mm at maximum load

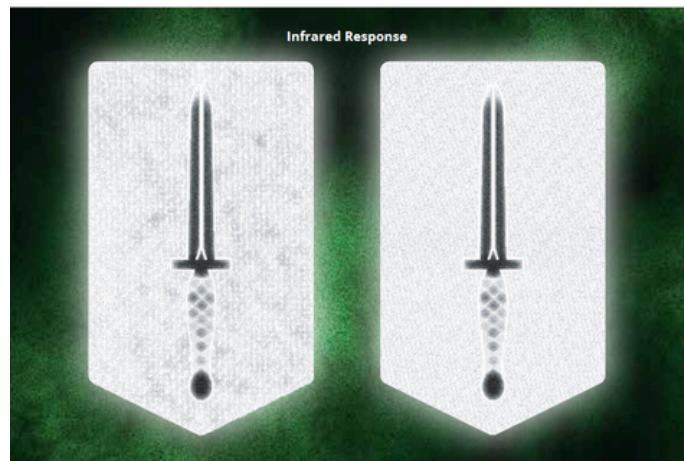
Black hessian texture



Black Tersus pattern



Infrared Response



PRODUCT RANGE INCLUDES:

- Uniform Patches and Insignia
- Dual ID Products
- Helmet Schims
- Antenna Markers
- Blood group patches
- Small 1" & 2" patches
- Vehicle Inverted V's





REDeye Passive infrared solutions for the covert identification of personnel, vehicles and equipment

REDeye reflective patches

Our infrared badges are backed with a power hook for greater strength and security when working with uniforms that have existing hook and loop capabilities. Once backed with this superior hook, badges are still completely flexible and can maintain a secure fastening to any flat or irregular surface whilst resisting any stresses from surrounding environment.

If power hook isn't required backing patches are also available on:

- Fabric, suitable to be sewn onto clothing
- Permanent strong adhesive
- Magnetic for reapplicable uses

Hooked backed patches 25x25mm & 50x50mm
IR transmission value of >75% at 835nm
Viewable over 800m using PVS-14 NVG

The REDeye Dual ID system

REDeye Dual ID infrared badges are designed to show two different images, one in daylight and one when viewed with an IR capable night vision device. Dual ID patches improve security by giving individuals or units an easily recognisable infrared signature that is unique to them. This custom IR signature can be additional insignia, callsigns or names.

In daylight conditions Dual ID badges appear as a normal full colour badge and the additional infrared ID remains undetectable. This is achieved by using an optical patterning technique to distract the eye with a complex top layer design that masks the infrared signature beneath.

Variety of attachment requirements:

- Low profile hook backing for flexible materials
- Heavy duty hook for flat rigid surfaces
- Temporary removable adhesive backings
- Permanent adhesive backings
- Fabric, woven or non-woven for sewing applications
- Static cling surface for applications to glass
- Magnetic for rapid application to metal surfaces



Daylight image



IR night vision image



Daylight image



IR night vision image





Infrared & Thermal Vehicle combat ID

Passive IR and Thermal custom identification products for Vehicle combat ID

Multispectral ID solutions from NIR to LWIR including fusion, covert and Hi-Vis markers

The Inverted V infrared reflective vehicle decals, is a cost effective way to mark your vehicles to prevent friendly fire casualties.

The infrared reflective "Up Arrow" inverted V marker uses a superior metallised prismatic retro-reflective base material. This produces a high grade infrared reflective signature with a IR transmission value of >70% at 835nm, viewable over 800m using a PVS-14 night vision device. UpArrow markers have a matt diffuse pattern finish on a clear abrasion resistant coating giving superior performance and durability in aggressive operational environments.



Backing options: Adhesive, Velcro, Magnetic.

Wavelength: NIR, SWIR, MWIR, LWIR, FUSION

Backing options:

ADHESIVE

VELCRO

MAGNETIC

Wavelength:

NIR

SWIR

MWIR

LWIR

FUSION

Product Reference Code

- AAV12 - 305mm (12")
- AAV14 - 355mm (14")
- AAV21 - 535mm (21")
- AAV28 - 715mm (28")

IR letters

Custom numbers and letters.

Backing options: Adhesive, Velcro, Magnetic.

Wavelength: NIR, SWIR, MWIR, LWIR, FUSION



Flags and symbols

Custom country IR flags and tactical symbols

Backing options: Adhesive, Velcro, Magnetic.

Wavelength: NIR, SWIR, MWIR, LWIR, FUSION





BLACKeye passive thermal solutions for the covert identification of personnel, vehicles and equipment

Thermal reflective material produces a high contrast passive thermal signal that can be seen day or night by thermal imagers. The surface emits a strong cold thermal image that can be seen across a wide range of deployment angles - vertical to horizontal plane.

The productline can offer an option for both infrared and thermal response performance in the same product . This combination extends the field operating performance to enable the viewing range from 750 nanometer to 8 microns+ giving an IR and thermal response image in a single product.

Thermal panels

As aircraft systems used for search have improved, moving from the crews eyes and use of binoculars to the array of thermal cameras in use today. The BLACKeye ground to air signal (GTAS) system is unique in that it can deliver a high contrast passive signal that can be seen by all thermal imagers by night or day. Rugged, lightweight, simple to deploy and relying on no power to operate BLACKeye GTAS system will continue to work until the moment you are recovered.

Backing:

- ADHESIVE
- VELCRO
- MAGNETIC

Wavelength:

- NIR
- SWIR
- MWIR
- LWIR
- FUSION



Thermal imaging



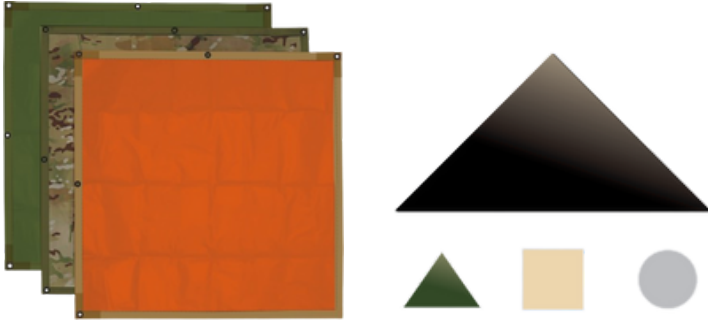
Thermal imaging



Custom: Text, Size, Colors
Available also as IR reflective

SPECIFICATION

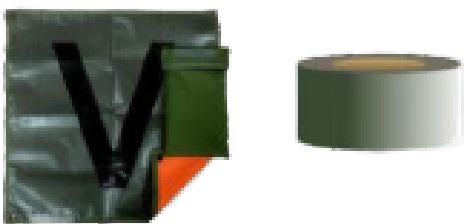
Description	Thermal ID markers, Reflects a "cold" Thermal signal
Wavelength	MWIR, LWIR FUSION
Visibility	Up to 10,000ft, depending on the imager
Options	Custom size, shape and colors
Options	Letters, numbers or symbols
Mounting options	Magnetic, adhesive backing, velcro, hook and loop



HOW DOES IT WORK

Thermal reflective material produces a high contrast passive thermal signal that can be seen day or night by thermal imagers. Most energy is invisible to the naked eye, including thermal energy, Fortunately this energy can be seen with a thermal imaging device. The thermal marker on your vehicle reflects the energy (temperature) from its surrounding environment, this results in a contrast in temperature between your vehicle and the marker. the contrast can be seen with you imaging device and appears hotter or colder than the vehicle

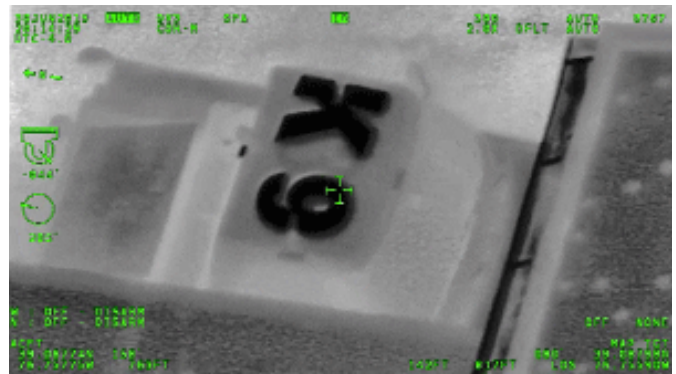
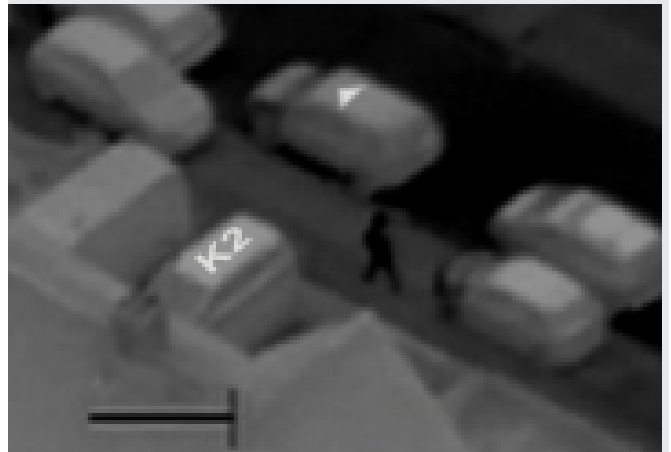
The productline can offer an option for both infrared and thermal response performance in the same product . This combination extends the field operating performance to enable the viewing range from 750 nanometer to 8 microns+ giving an IR and thermal response image in a single product.



Custom: Text, Size, Colors
Available also as IR reflective

Model BLACKKey

Thermal ID markers



Passive Thermal Targets

(Thermal sights)

We develop and manufacture customized thermal targets from raw to final product. Our thermal target solution is in operational use by various defense forces and other European armies.

Technology

Passive, no power boresighting, calibration and shooting targets for thermal sights made from a unique material that has natural thermal contrast – suitable for any weather for outdoor use.

Supplied with or without adhesive backing including repair patches.

Calibration and Zeroing

- Standard and custom Calibration and Zeroing
- Passive thermal targets.
- Long-range thermal calibration and boresighting thermal targets.
- Infrared stereo calibration targets.
- Multispectral zeroing

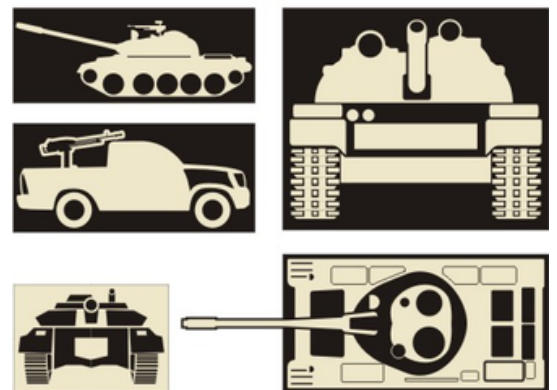
No - Tilt targets - new passive thermal targets that don't require tilting backward.

Vehicles

- Tanks, Jeeps, and trucks silhouettes for thermal and day sights.
- All Vehicles can be custom-made up to real 1:1 size
- Photo and Thermal realistic vehicles.

Thermal Targets for indoor

The new patented technology of thermal targets for indoor shooting range use.



Backing:

ADHESIVE

VELCRO

MAGNETIC

Wavelength:

MWIR

LWIR

FUSION



BETALIGHT

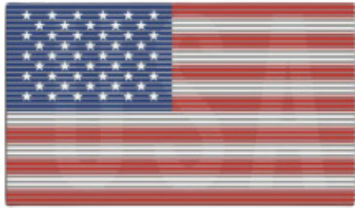
when reliability really counts

www.betalight-tactical.com

info@betalight.nl

0031 - 341360111

Retro-Reflective Patches High visibility all light prismatic reflective custom patches



Dual-Reflective - All light reflective
Dual mode Reflective
Visual: flag
Reflection: custom text

All light reflective patch with two different modes: Visual can be flag or text with reflection of custom text or callsigns.

Custom: Text, Size, Colors - Available also as IR reflective

Photoluminescent ID - Glow in the dark, Luminous custom flags and letters



Backing

ADHESIVE

VELCRO

MAGNETIC

Luminous vehicle ID in custom levels.
Custom text, flags and colors.



Custom size and colors

Reflective & Luminous - Retro-reflective & Photo-luminescent velcro ID



Backing

ADHESIVE

VELCRO

MAGNETIC

Combines two technologies in one product creating high visibility ID:
Retro-reflective to all light including infrared and Luminousglow in the dark.



Custom size and colors

