



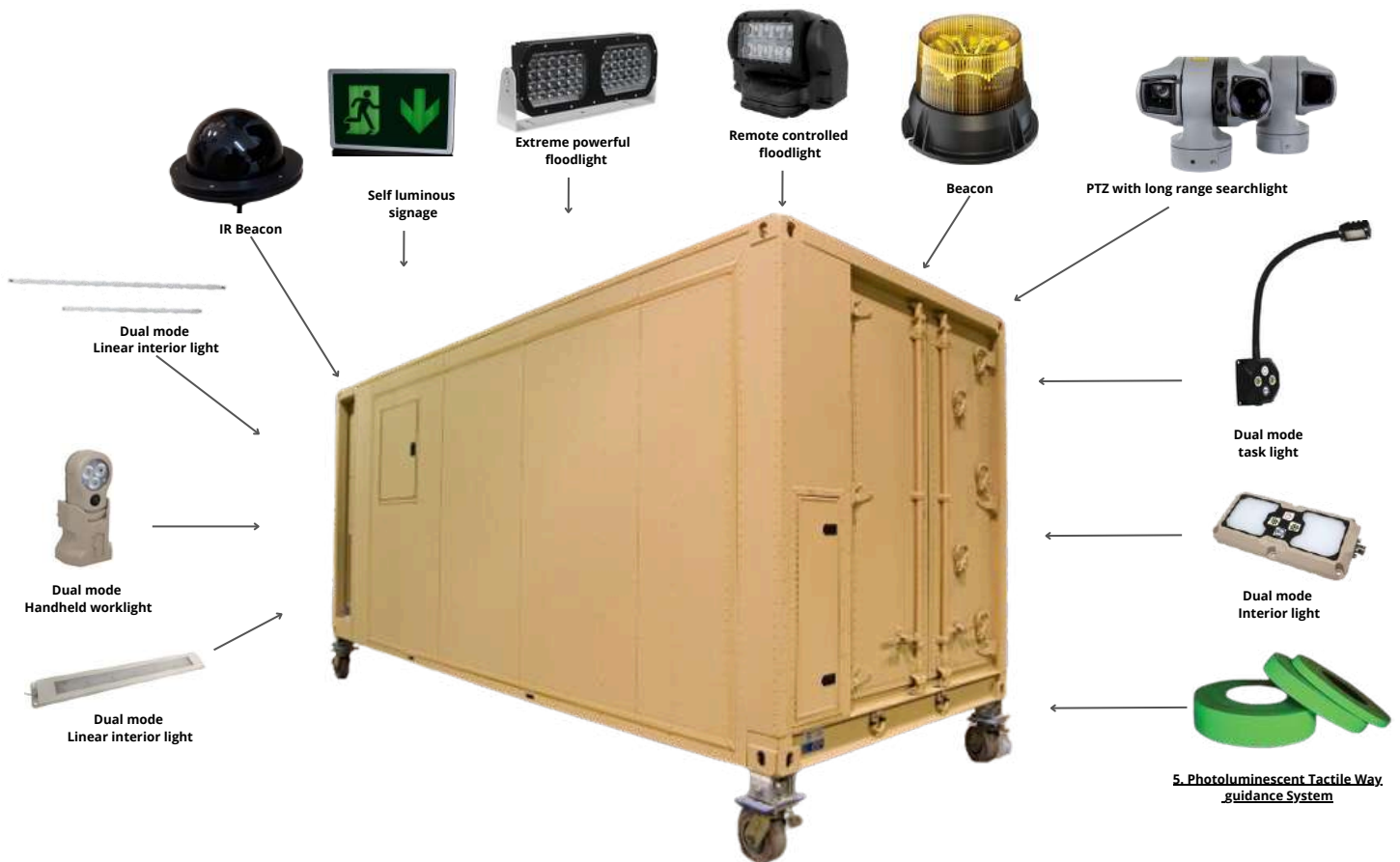
BETALIGHT  
when reliability really counts

TACTICAL

## MILITARY SHELTER LIGHTING



# SHELTER LIGHTING



Welcome to the comprehensive documentation of Betalight B.V., a leading supplier of cutting-edge military shelter lights. At Betalight, we take pride in providing a diverse range of lighting solutions tailored to the unique needs of military environments. Our product lineup boasts an array of innovative offerings, including dual-mode interior lights, beacons, security cameras, and task lamps. As a trusted partner in military lighting solutions, Betalight is committed to delivering top-quality, reliable products that meet the stringent demands of defense applications. Join us as we explore the features, specifications, and applications of our advanced lighting systems designed to enhance operational efficiency and security in military shelters.



**BETALIGHT**  
when reliability really counts

[www.betalight-tactical.com](http://www.betalight-tactical.com)  
[info@betalight.nl](mailto:info@betalight.nl)  
0031 - 341360111



## MILITARY SHELTER LIGHTING

DESIGNED FOR RETROFIT AND NEW BUILD MARKET SOLUTIONS

**Titles below are clickable**

- 
4. [Tritium Illuminated signs](#)
  5. [Photoluminescent Tactile Way guidance System](#)
  6. [low profile, linear flood light](#)
  7. [Linear interior light](#)
  8. [Dual mode linear interior light](#)
  10. [Compact Dome Light](#)
  11. [Flexible task light](#)
  12. [LED Handheld with charging dock](#)
  13. [Most powerful flood light](#)
  14. [PTZ with long range searchlight](#)
  15. [LED Work Light remote controlled](#)
  16. [IR 360 ID Flashing Beacon](#)
  17. [Low Profile LED Strobe Lights](#)
  18. [LED Solar Flasher & Warning Light](#)



# TRITIUM SELF ILLUMINATED SIGNS

An innovative choice for signage: self-luminous signs and markers. The most energy efficient emergency signs currently on the market, these versatile, rugged and durable products are redefining the emergency signage sector.

Betalight's self-luminous line of products is powered by a tritium light source (GTLS) that remains continuously illuminated. Betalight takes the waste product from the production of electricity used in homes and communities and turns it into an important life safety device. Maintenance-free and 100% self-luminous, this line contains products with a useful lifespan up to 15 years. At the end of its life, the materials contained within these products can be recycled. Betalight self-luminous products meet all applicable fire and building codes, and are available in a variety of finishes that complement any location. Ideally suited for applications where a reliable emergency exit sign is required, the durable construction of Betalight's self-luminous products ensures constant, dependable operation for years to come.

## KEY FEATURES

- Completely independent
- Maintenance free
- No external power, no additional light source,
- Operate in temperatures from -60 °C to +80 °C
- Absolutely reliable light for up to 15 years
- Waterproof & Corrosion resistant
- No heat is generated
- Suitable for use in hazardous atmospheres
- Legend can be changed insitu

## PHYSICAL CHARACTERISTICS

Height:	210 mm
Wide:	325 mm
Depth:	25 mm
Material:	Tough, fire resistant ABS
Weight:	800 g



**BETALIGHT**  
when reliability really counts

[www.betalight-tactical.com](http://www.betalight-tactical.com)  
[info@betalight.nl](mailto:info@betalight.nl)  
+31 - 341360111

# PHOTOLUMINESCENT TACTILE WAY GUIDANCE SYSTEM



Glow in the dark way guidance provides some of the most eye-catching and sophisticated options available in the industry.

The products are self-luminous, therefore, needing no external or internal electrical power supply. The photoluminescent products are charged in ambient office lighting conditions and will gradually reduce in brightness over a period of 60 minutes.

## BENEFITS

Using inherently reliable technology and simplicity of operation, the system also delivers excellent operational benefits. Technical maintenance is not required and there are no consumable or moving parts. The cost of ownership is consequently extremely competitive, and in the event of the shelter being modified or refurbished, the modular nature of the system enables changes and extensions to be implemented quickly and conveniently.

## KEY FEATURES

- Absolute reliability
- Tactile and visual guidance to exits
- Modular construction enables customised systems high output photoluminescent strip and fittings Directional way guidance betalight inserts
- Quick and easy self-assembly and installation
- No electrical supply or batteries required
- Long, maintenance free service life
- Comply with ISO17398E - 400 mcd

## AVAILABLE IN

- |                    |                  |
|--------------------|------------------|
| • Signs            | • Doormarking    |
| • (Anti-slip) Tape | • Maps           |
| • Arrows           | • Stair profiles |
| • Tiles            | • Reflective     |
| • Dots             |                  |



**BETALIGHT**  
when reliability really counts

[www.betalight-tactical.com](http://www.betalight-tactical.com)  
[info@betalight.nl](mailto:info@betalight.nl)  
+31 - 341360111

## Model CTK590

**low profile, rugged & durable area  
lighting solution**



### SPECIFICATION

Description	24 VDC Shelter light
Primary colour	White 5700K CRI>80
Blackout	red, green, blue, none
Power consumption	26W
Length	600 mm
Shape	Rectangular
Outer Lens Material	Polycarbonate / acrylic blend
Outer Lens Color	Diffused
Housing Color	Black or nature anodized
Operating Temperature	-40 °C
Connector or Wiring	Flying lead
Standards	IP56
	MIL-STD 461 compliant

### FEATURES

- High reliability
- High CRI
- Rugged, durable construction
- Dimmable local or external
- Dual colour mode
- MTBF 50000 hours
- NVG Friendly
- ROHS compliant
- Colour temperature 4500-6000K (warm white light version also available)



### MODEL CTK590

Part No.	Description
59024B	24 VDC CTK 590, White - blue
59024R	24 VDC CTK 590, White - red



**BETALIGHT**  
when reliability really counts

www.betalight-tactical.com  
info@betalight.nl  
0031 - 341360111

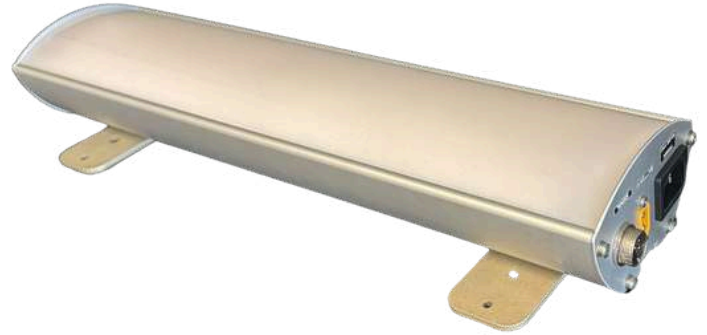


## SPECIFICATION

Description	Dual mode Linear interior light
Light output	2180 - 3279 - 4360 lumen
Secondary colour	Blue, red, green, none
Housing Colour	Black, grey
Input voltage	110 - 240 VAC
	24 VDC
Length	40, 60 or 80 cm
Width	96 mm
Housing Material	Aluminium
Lens colour	PMMA Diffusing Lens
Mounting Type	Universal Mount
Operation Temp	-46 °C / 50 °C
Standards	Compatible with MIL-STD-461F
	TS EN 12464 (NEN EN 12464)
	IPX4

## Model 422010

## Dual mode linear interior light



## Part number configuration

422010-01 / X X X X X X

422010-02\*

## Voltage

S - Custom  
A - 18 -35 VDC  
B - 110-240 VAC

## Primary colour

S - Custom  
1 - White 6500K  
2 - Warm White 4000K  
3 - Red  
4 - Green

## Blackout colour

S - Custom  
0 - none  
1 - Red  
2 - Blue  
3 - Green

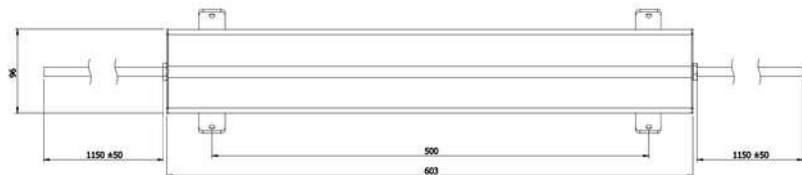
## Custom

## Bracket

MST0 - No bracket  
MST1 - Bracket  
MST2 - Corner bracket  
MST3 - Hooked bracket

## Length

S - custom  
1 - 400 mm  
2 - 600 mm  
3 - 800 mm



## \* Notes

422010-01 Without back-up battery  
422010-02 Rechargeable backup battery

## ACCESSORIES

On request



**BETALIGHT**  
when reliability really counts

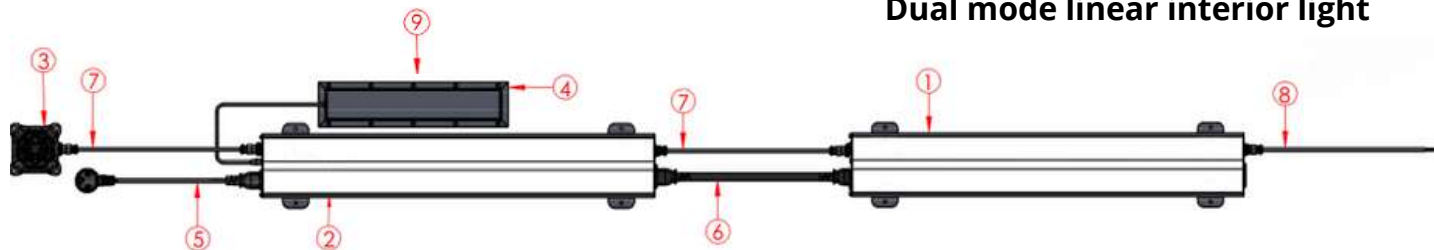
[www.betalight-tactical.com](http://www.betalight-tactical.com)
[info@betalight.nl](mailto:info@betalight.nl)

+31 - 341360111

## SHELTER LIGHT ACCESSOIRES

## Model 422010

## Dual mode linear interior light



## Part Number

1. 422010-01 - Without backup battery
2. 422010-02 - Rechargeable backup battery
3. 422010-CB - Control box
4. 422010-BB - Battery box
5. 422010-CS1 - Power Cable
6. 422010-CS2 - Power Cable Daisy Chain
7. 422010-CS5 - Signal Cable Daisy Chain
8. 422010-CS4 - Signal Cable Door switch
9. DTP18650X - Backup battery

422010-CS3 - not used in the drawing

## How to order:

422010-CS1-270: Power cable in 270 cm

## CABLE SETS

<p><b>422010-CS1</b></p>	<p>AF215A</p> <ul style="list-style-type: none"> <li>From "male plug" to "female europlug"</li> <li>From shelter light to power supply</li> <li>112-240 VAC</li> <li>422010-CS1-01: 1 meter</li> <li>422010-CS1-02: 2 meters</li> <li>422010-CS1-05: 5 meters</li> <li>422010-CS1-10: 10 meters</li> </ul>
<p><b>422010-CS2</b></p>	<p>AF215 AF215A</p> <ul style="list-style-type: none"> <li>From "male europlug(AF215)" to "female europlug(AF215A)"</li> <li>422010-CS2-01: 1 meter</li> <li>422010-CS2-02: 2 meters</li> <li>422010-CS2-05: 5 meters</li> <li>422010-CS2-10: 10 meters</li> </ul>
<p><b>422010-CS3</b></p>	<p>1-Power 2-On/Off 3-Mode 4-Dim up 5-Dim down 6-Power Return 7-Door Switch</p> <ul style="list-style-type: none"> <li>GX16-7 Female to cable without socket</li> <li>From shelter light to control box</li> <li>422010-CS3-01: 1 meter</li> <li>422010-CS3-02: 2 meters</li> <li>422010-CS3-05: 5 meters</li> <li>422010-CS3-10: 10 meters</li> </ul>
<p><b>422010-CS4</b></p>	<p>1-Power 2-On/Off 3-Mode 4-Dim up 5-Dim down 6-Power Return 7-Door Switch</p> <ul style="list-style-type: none"> <li>GX16-7 Female to GX16-7 Female</li> <li>For daisy chain and/or shelter to control box</li> <li>422010-CS4-01: 1 meter</li> <li>422010-CS4-02: 2 meters</li> <li>422010-CS4-05: 5 meters</li> <li>422010-CS4-10: 10 meters</li> </ul>
<p><b>422010-CS5</b></p>	<p>1-Power 2-Spare 3-Spare 4-Spare 5-Spare 6-Spare 7-Door Switch</p> <ul style="list-style-type: none"> <li>GX16-7 Female to cable without socket</li> <li>For door switch connection</li> <li>422010-CS5-01: 1 meter</li> <li>422010-CS5-02: 2 meters</li> <li>422010-CS5-05: 5 meters</li> <li>422010-CS5-10: 10 meters</li> </ul>

## CONTROL BOX

422010-CB1  
\* with blackout



422010-CB2  
\* no blackout



Standart Cable Lenght:250 mm.±10

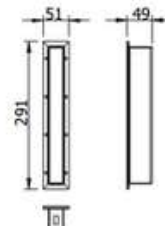
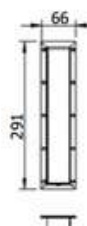


\* with blackout  
422010-CB3



\* no blackout  
422010-CB4

## BATTERY BOX



422010-BB1

• Horizontal

422010-BB2

• Vertical



**BETALIGHT**  
when reliability really counts

www.betalight-tactical.com

info@betalight.nl

+31 - 341360111



## SPECIFICATION

Description	Dual mode Linear interior light
Light output	200 lumen
Secondary colour	Blue, red, green
Programmable	Yes
Housing Colour	Black, grey
Input voltage	12 & 24 V DC
Length	20, 40, 60 or 140 cm
Housing Material	Aluminium
Lens colour	PMMA Diffusing Lens
Mounting Type	Universal Mount
Operation Temp	-40 °C to 65 °C
Connector or Wiring	3 different options
Standards	Compatible with MIL-STD-461E Compatible with MIL-STD-810

## Model 420017

Linear interior light 60 or 140 cm



## Part number configuration

**420017-0X / X X X X 00****Voltage**

S - Custom  
A - 12 VDC  
B - 24 VDC

**Connector**

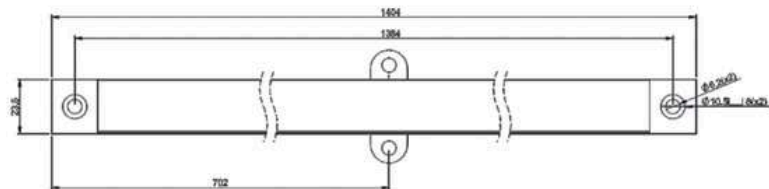
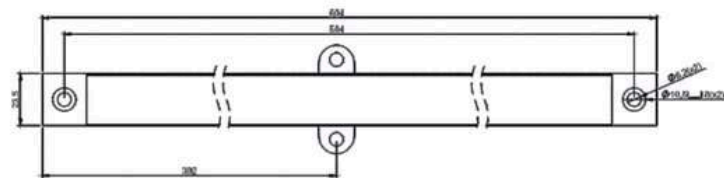
S - Custom  
1 - Cable without connector  
2 - 282087-1 AMP  
3 - 282105-1 AMP

**Black out colour**

S - Custom  
1 - Red  
2 - Blue  
3 - Green

**Colour**

S - Custom  
1 - Black anodizing  
2 - Natural anodizing

**420017-01 (140 cm)****420017-02 (60 cm)****420017-03 (40 cm)****420017-04 (20 cm)****Notes****This product is used with control box 420017**

\*This number will be assigned by the manufacture if you choose (S) in of the steps of the configuration.

\*\* Controller on the next page

## MODEL 420017

**Part No. Description**

420017-01	Dual mode Linear interior light, 140 cm
420017-02	Dual mode Linear interior light, 60 cm
420017-03	Dual mode Linear interior light, 40 cm
420017-04	Dual mode Linear interior light, 20 cm



**BETALIGHT**  
when reliability really counts

www.betalight-tactical.com

info@betalight.nl

+31 - 341360111

## SPECIFICATION

Description	LED Linear control box
Programmable	Yes
Housing Colour	Black, grey
Input voltage	12 & 24 V DC
Dimesnions	30 x 92 x 70 mm
Housing Material	Aluminium
Mounting Type	Universal Mount
Operation Temp	-40 °C to 65 °C
Connector or Wiring	3 different options
Standards	IP 54 sealing Compatible with MIL-STD-461E Compatible with MIL-STD-810

## Model 420017-KK

## LED Linear control box



## Part number configuration

420017 KKX / X X X X 00

## Modules #

S - Custom  
10 - Single module  
20 - Double module  
30 - Three modules  
40 - Four modules  
50 - Five modules

## Voltage

S - Custom  
A - 12 VDC  
B - 24 VDC

## Switching

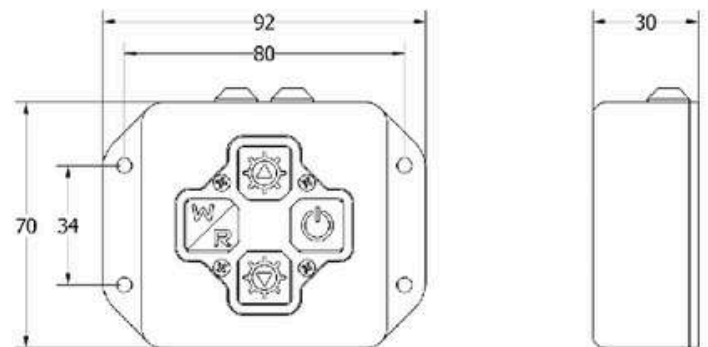
S- Custom  
1 - Membrane switch  
2 - Without membrane switch

## Colour

S- Custom  
1- RAL 9005 (Jet black)  
2- RAL 9016 (Traffic White)  
3- RAL 6014 (Yellow / Olive)

## Connector

S- Custom  
1- Cable without connector  
2- Input 282087-1 AMP  
Output 282105-1 AMP



## Notes

\*This number will be assigned by the manufacture if you choose (S) in of the steps of the configuration.



# Model 420016

## Compact Dome Light, programmable dimmable



## SPECIFICATION

Description	Compact dome light, programmable, dimmable and with blackout function
Light output	95 cd / 196 Lux at 100 cm
Beam	Flood
Input voltage	10 to 32 V DC
Power consumption	9.71 Watt
Housing colour	6 colour options
Height	196
Width	96
Depth	22
Housing material	Aluminium
Lens colour	PMMA Diffusing Lens
Mounting type	Universal Mount
Connector or wiring	6 different options
Standards	IP54, MIL-STD-1275D Compatible with MIL-STD-461E Compatible with MIL-STD-810 F

## PART NUMBER CONFIGURATION

420016-01 / X X X X 00  
420016-02

### Voltage

S- Custom  
A- 12 VDC  
B- 24 VDC  
C- 10-32 VDC \*\*

### Connector

S- Custom  
1- Cable without connector  
2- MS3112E8-3P  
3- MS3112E8-4P  
4- 282087-1 AMP  
5- 282105-1 AMP  
6- 120-8551-005 (Sure Seal)  
7- DTM04-6P Deutsch connector

### Blackout colour

S- Custom  
1- Red  
2- Blue  
3- Green

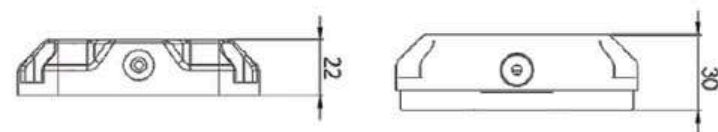
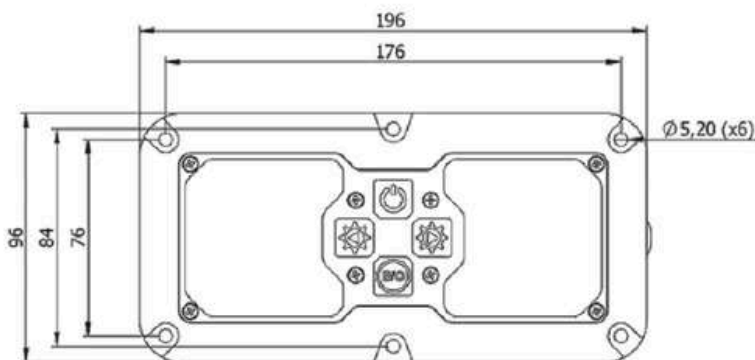
### Colour

S- Custom  
1- RAL 9005 (black)  
2- RAL 9016 (White)  
3- RAL 6014 (Yellow Olive)  
4- RAL 6015 (Black Olive)  
5- RAL 6019 (Pastel Green)  
6- RAL 1019 (Grey Beige)  
7- RAL 8025 (Pale Brown)

### Notes

\*This number will be assigned by the manufacture if you choose (S) in of the steps of the configuration.

\*\*In case of A and B voltage types are selected, standard body will be used  
In case of C voltage type is selected, thick body will be used



420016-01  
For Type A & B Voltage

420016-02  
For Type C Voltage

## MODEL 420016

### Part No. Description

420016-01	Compact dome light, 12V
420016-02	Compact dome light, 10 - 32V



**BETALIGHT**  
when reliability really counts

www.betalight-tactical.com  
info@betalight.nl  
+31 - 341360111

# Model 420018

## Gooseneck dual mode, dimmable



## SPECIFICATION

Description	12 - 24V Map light, NVG Compatible
Light angle	90 degrees
Blackout	Red, blue, green, none
Neck length	30, 40 or 50 cm
Height	380.20 mm
Outer Lens Material	PMMA
Outer Lens Colour	Diffusing lens
Housing Material	Aluminium
Housing Colour	7 different options
Operating Temp	-45 °C / 85 °C
Standards	MIL-STD 461E MIL-STD 810F IP56

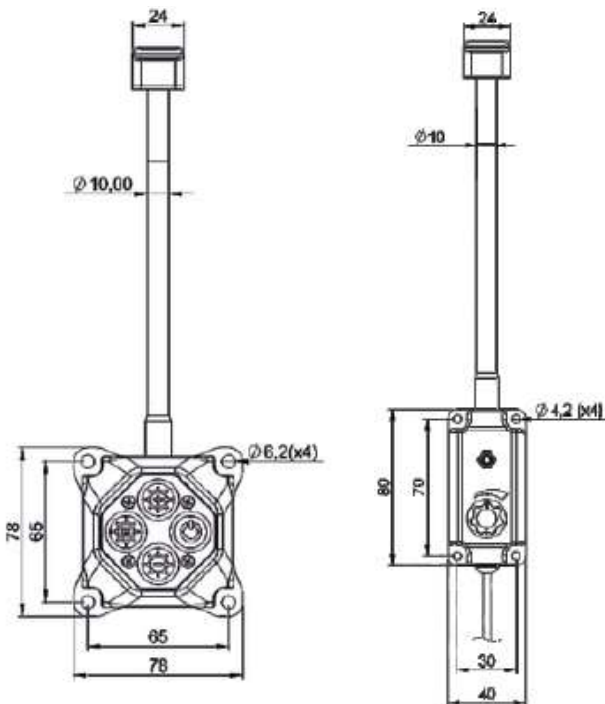
## Part number configuration

<b>420018-01</b>	/	X	X	X	X	00
<b>420018-02</b>						
<b>420018-03</b>						
<b>420018-04</b> **						
<b>Neck length</b> 1- 30 cm 2- 40cm 3- 50cm						
<b>Voltage</b> S - Custom A - 12 VDC B - 24 VDC						
<b>Connector</b> S- Custom 1- Cable without connector 2- MS3111E8-3P 3- 282105-1 AMP 4- 282087-1 AMP						
<b>Blackout colour</b> S- Custom 1- Red 2- Blue 3- Green						
<b>Colour</b> S- Custom 1- RAL 9005 (Jet black) 2- RAL 9016 (Traffic White) 3- RAL 6014 (Yellow / Olive) 4- RAL 6015 (Black Olive) 5- RAL 6019 (Pastel Green) 6- RAL 1019 (Grey Beige) 7- RAL 8025 (Pale Brown)						

### Notes

\*This number will be assigned by the manufacture if you choose (S) in of the steps of the configuration.

- \*\* 420018-01 Membrane switch / with blackout  
 420018-02 Membrane switch / without blackout  
 420018-03 Potentiometer / with blackout  
 420018-04 Potentiometer / without blackout



## MODEL 420018

Part No.	Description
420018-01	Gooseneck light, dimmable, programmable



**BETALIGHT**  
when reliability really counts

www.betalight-tactical.com  
 info@betalight.nl  
 +31 - 341360111

# Model 420081

## LED Handheld with charging dock



## SPECIFICATION

Description	LED Military handlamp with charging dock
Voltage	12 or 24 V DC
Power consumption	42W / 5.36W blackout @24VDC
Light output	75cd / 7cd blackout
Light colour	White
Blackout colour	red
Mounting	Magnetic fastening & belt clip
Outer Lens Material	PMMA
Outer Lens Colour	TIR Lens
Housing Material	Aluminium
Housing Colour	13 different colour options
Connector or Wiring	Charging doc or cable
Standards	IP65

420081 / X X X X 00 \*

**Voltage**  
S - Custom  
A - 12 VDC  
B - 24 VDC

**Charge equipment**  
S- Custom  
1- Charge Dock  
2- With cable and car plug  
Standard CB6-10SL-4SN

**Blackout function**  
1- Custom  
2- With blackout function  
3- Without blackout function

**Colour**  
S- Custom  
1- RAL 9005 (black)  
2- RAL 9016 (White)  
3- RAL 6014 (Yellow Olive)  
4- RAL 6015 (Black Olive)  
5- RAL 6020 (Chrome Green)  
6- RAL 1001 (Beige)  
7- RAL 1019 (Grey Beige)  
8- BD1T00S734 (Earth Yellow)  
9- RAL 5011 (Steel Blue)  
A- BD2T20S771 (Desert tan)  
B- 383-34094 (Mat green)  
C- RAL 8025 (Pale Brown)  
D- RAL 6003 (Olive Green)

### Notes

\*This number will be assigned by the manufacture if you choose (S) in of the steps of the configuration.

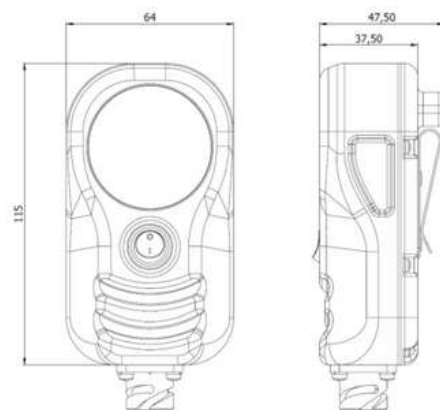
420081 - DCK - X X 0 \*

### Connector

- S- Custom
- 1- Cable without connector
- 2- MS27142-3 (GND: MS27144-2)
- 3- 282104-1 AMP (with cable)
- 4- 282080-1 AMP (with cable)
- 5- 120-8551-000 Sure Seal (with cable)
- 6- 120-8552-000 Sure Seal (with cable)

### Colour

- S- Custom
- 1- RAL 9005 (black)
- 2- RAL 9016 (White)
- 3- RAL 6014 (Yellow Olive)
- 4- RAL 6015 (Black Olive)
- 5- RAL 6020 (Chrome Green)
- 6- RAL 1001 (Beige)
- 7- RAL 1019 (Grey Beige)
- 8- BD1T00S734 (Earth Yellow)
- 9- RAL 5011 (Steel Blue)
- A- BD2T20S771 (Desert tan)
- B- 383-34094 (Mat green)
- C- RAL 8025 (Pale Brown)
- D- RAL 6003 (Olive Green)



## LED HANDHELD LIGHT

Part No.	Description
420081	LED Military handlamp
420081- DCK	Charging dock



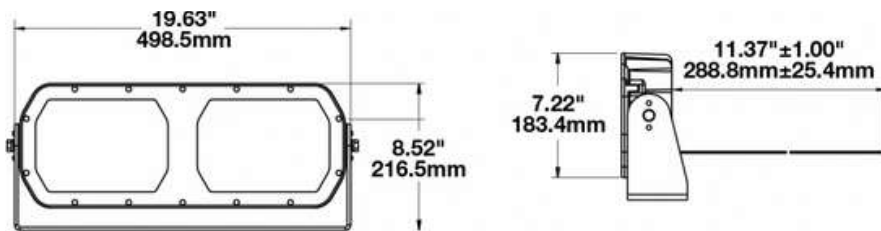
**BETALIGHT**  
when reliability really counts

www.betalight-tactical.com  
info@betalight.nl  
+31 - 341360111



## Model 623

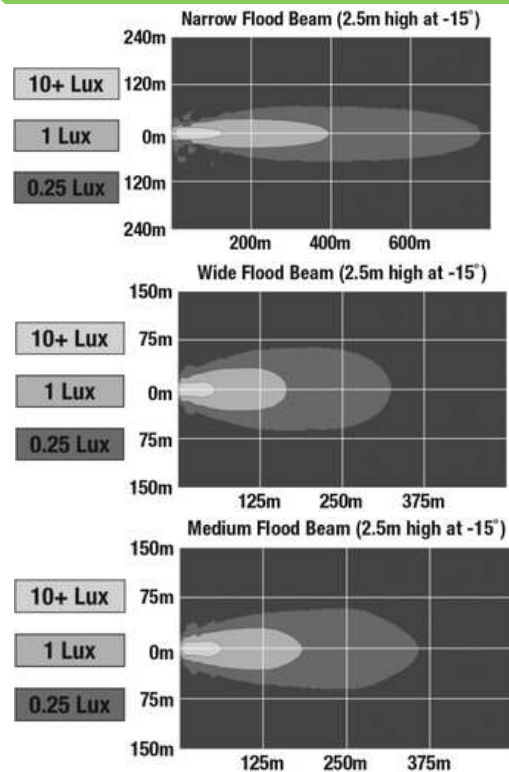
**Most powerful flood light at 20,000 eff. Lumen**



### SPECIFICATION

Description	Model 623, most powerful product yet LED Work Light with Narrow Flood Beam
Lumen Output	Raw: 40,000 Effective: 20,000
LED Colour	5700K
Input voltage	16V - 60 V DC
Current Draw	10A @ 24V DC 5A @ 48V DC
Lens Material	Glass
Housing Material	Die-Cast Aluminum
Mounting Type	Universal Pedestal Mount
Connector	Wire Harness: SJ000W 6m Harness
Wiring	Black Wire: Negative Red Wire: Positive
Standards	Sealed to IP 67

### EFFECTIVE LUMEN ISOLUX CHARTS



### 623 NF NARROW FLOOD BEAM

Part No.	Pattern	Pack Qty
0552951	Narrow Flood beam	Single
0546681	Medium Flood beam	Single
0546691	Wide Flood beam	Single

### SPECIFICATION

Part No.	Specification
----------	---------------



**BETALIGHT**  
when reliability really counts

www.betalight-tactical.com  
info@betalight.nl  
0031 - 341360111

## SPECIFICATION

Description	PTZ with long range searchlight
Image sensor	1/1.9" progressive scan RGB CMOS
Zoom	30x optical zoom, 21x digital zoom
Input voltage	100 - 240 V AC
Power consumption	25W max 71max
Dimensions	210 x 330 x 313 mm
Temp range	-50 °C to 55 °C
Connector or Wiring	RJ45 10BASE-T/100BASE-TX/ TX/1000
Approvals	IP68 EMC, Environmental, safety , Network
Datasheet	On demand

By utilising a proven and commercially available PTZ, and adding to it not only one but up to three, military grade, illuminators, we have got ourselves a powerful surveillance and deterrence package at a reasonable price, ready to be deployed as a stand-alone unit. or as part of a larger system.

## FEATURES

### Long range, focusable searchlight

- 5 MCd laser based searchlight, for a 4.5km range
- 1 -13° focusable and dimmable beam
- Strobe function

### Infrared Laser module

- 1,5° / 26,2 mrad beam divergence
- 850Nm
- Illuminates a vehicle at 1500m
- Class 3B Laser 499mW

### Green laser dazzler

- 6 mrad beam divergence
- Efficient disruption beyond 1400m+
- Class 3B Laser 499mW

### Day/Night Camera

- HDTV 1080p with 30x zoom
- Up to 300° pan
- -90° to +90° tilt

## Model SQ62

### PTZ with long range searchlight



## PTZ WITH LONG RANGE SEARCHLIGHT

Part No.	Description
SQ62	PTZ with long range searchlight



## Specification

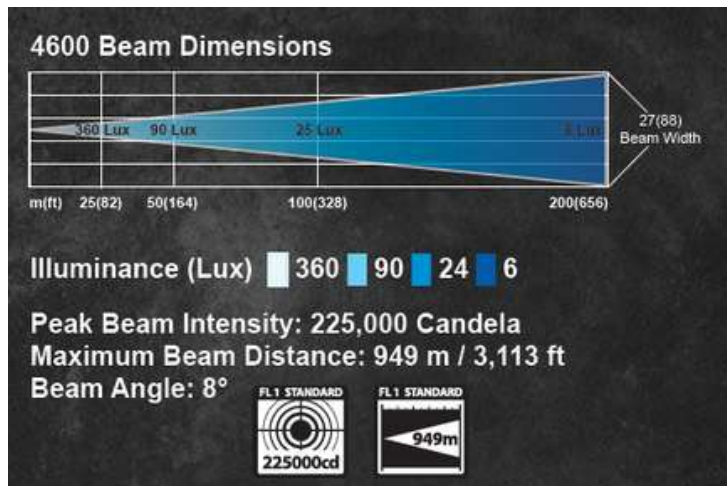
Description	23 - 32V DC, Dual mode IR / White
Light output Vi	544,000 cd
Infra red	940nm
Horizontal	360°
Vertical	180°
Speed	Auto engage speed control
Material	Carbon fiber
Outer Lens Material	Polycarbonate
Outer Lens Colour	Clear
Housing Colour	Black
Operating Temperature	-30 °C 60 °C
Standards	MIL-STD-461G MIL-STD-810G IP 56

## Model 4600

### LED Work Light remote controlled Dual Illumination



## EFFECTIVE LUMEN ISOLUX CHARTS



The military remote-controlled searchlight with infrared (IR) function is a cutting-edge lighting solution designed specifically for military operations in low-light environments. This advanced device combines the power of remote control with the stealth capabilities of infrared technology, providing military personnel with unparalleled visibility and tactical superiority during nighttime missions.

### Features

- Auto engage speed control
- Hard wired dash control
- Dual Illumination Capability
- Hard Wired Dash Control
- Programmable Home Button
- Weather-Tight Enclosure
- Carbon Fiber Body
- Separate Stainless Steel Mounting Plate

## 4600 DUAL ILLUMINATION

Part No.	Pattern
4600	Narrow flood beam IR and visual white light

## SPECIFICATION

Part No.	Specification
17920	Clear security dome
22-22	Wiring harness - 6.7 meters



**BETALIGHT**  
when reliability really counts

www.betalight-tactical.com  
info@betalight.nl  
+31 - 341360111

# Model 2334

## IR 360 ID Flashing Beacon



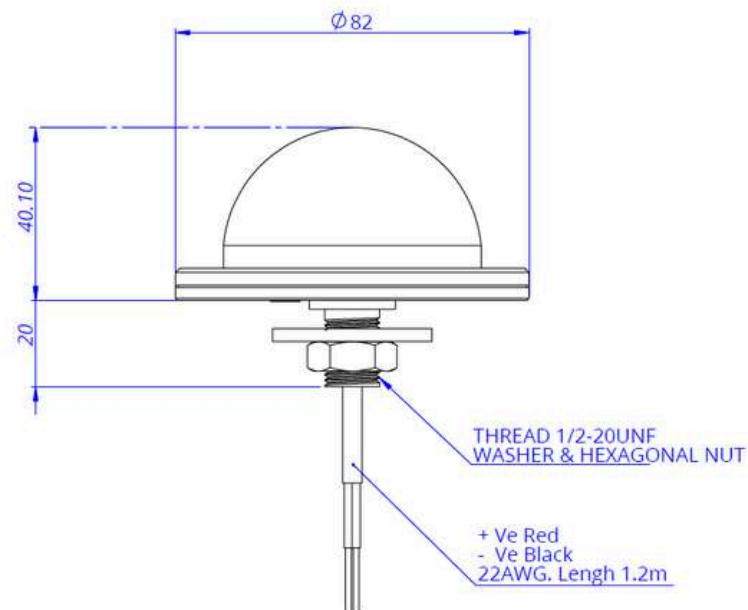
## SPECIFICATION

Description	IR 360 ID Flashing Beacon
Input voltage:	12 - 28V
Wavelength	880 nm
Outer Lens Material	Black acrylic
Housing Material	Aluminum 6061-T6
Housing Colour	Hard black anodised
Mounting Type	Low Profile Mount
Min / max temp.	-55 / 71°C
Connector or Wiring	Flying lead
Mode	Flashing
Range	5 Km depending on conditions

Model 2334 features most powerful near-IR (NIR) compact vehicle beacon,

This beacon serves the crucial purpose of covertly identifying vehicles within military and security convoys through the use of a flashing Infrared Marking Beacon. Given the growing number of vehicles in the combat arena, there is a heightened demand for Identify Friend or Foe (IFF) signaling devices. The IR Beacon offers a reliable IFF Infrared Marking Beacon that can be securely affixed or mounted to any vehicle.

When utilized within a convoy of vehicles, where each vehicle is clearly identified by its IR beacon, they can effortlessly monitor and locate one another. Aerial assets can maintain a constant visual on the ground vehicles by activating the aircraft tracking system on "Automatic." Once a ground vehicle has been locked onto, the IR beacon becomes the focal point of the auto-tracker, ensuring its movements are continually displayed on the screen.



## IR BEACON

Part No.	Description
2334	IR 360 Flashing beacon

Pack Qty
Single





## SPECIFICATION

Description	Strobe Lights, Class II Strobe Light
Modes	6 different modes
Candela output	280
Patterns	Rotation warning / strobe warning
Input voltage	12V - 24 V DC
Current Draw	0.345A @ 12V DC 0.225A @ 24V DC 0.163A @ 36V DC 0.131A @ 48V DC 0.100A @ 72V DC
Lens Material	Polycarbonate
Housing Material	Aluminum
Mounting	4 Point Mount
Operation Temp	-40 °C / 60 °C
Connector	12" Flying Leads
Mounting options	Pole mount, Magnetic, fixed mount
Standards	Sealed to IP69K ECE Reg 10 IP67, IP69K SAE J 845

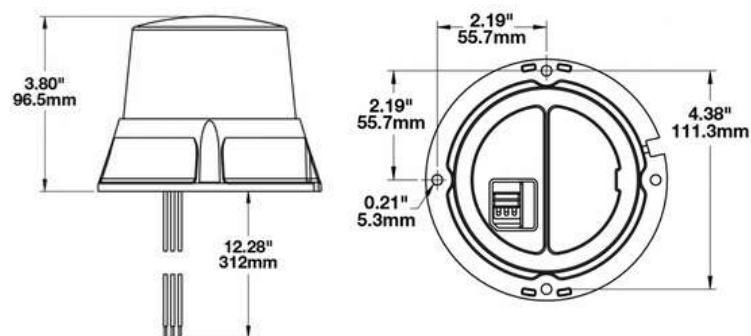
## Model 406

## Low Profile LED Strobe Lights - Class II



## Features

- LED technology uses less power for longer lasting output
- Meets Class II requirements for strobe lights (emergency vehicles such as police, fire and ambulance)
- Secure seal for marine and water exposure
- Newer mounting pattern for easy installation
- Industrial strobe lights also available in Class I with our Model 407



## MODEL 406

Part No.	Colour	Modes	Pack Qty
0646501	Amber	6 Mode	Single
0646541	Red	6 Mode	Single
0646531	Blue	6 Mode	Single
0646881	Green	6 Mode	Single



**BETALIGHT**  
when reliability really counts

www.betalight-tactical.com  
info@betalight.nl  
+31 - 341360111



## Model 210

### LED Solar Flasher & Warning Light

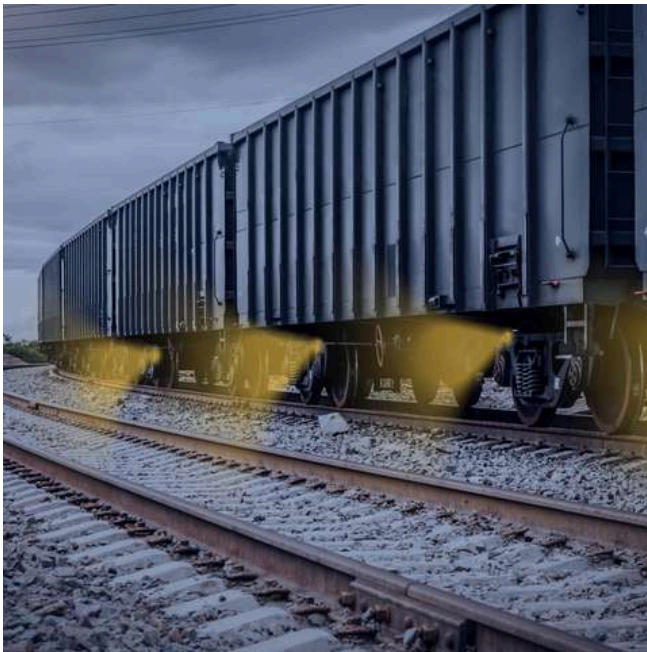
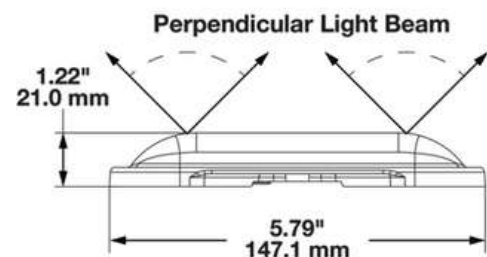


### SPECIFICATION

Description	LED Solar Amber Flasher and Warning Light
Beam pattern	Flashing warning
Battery time	120 hours
Battery charge time	6 hours
light output	11 candela
Outer Lens Material	Acrylic
Outer Lens Colour	Clear
Housing Material	Polycarbonate
Housing Colour	Black
Size	136 x 147.1 x 21 mm
Mounting Type	Low profile
Min & max Operating Temperature	-40 °C 65 °C
Weight	180 gram
Standards	IEC IP69K

### FEATURES

- Up to 11 Candela brightness
- Visibility of up to 1500 meter
- Perpendicular light beam offers easier identification from further distances
- ClickBond™ adhesive mount eliminates drilling and risking the structural integrity
- Rugged Housing is IP67, and IP69k rated for the harshest environments
- Available in amber or red to accommodate multiple applications
- Clean, reusable energy LED is maintenance-free
- Fully Charged in 6 hours, lasts for 120 hours
- 1-year warranty



### MODEL 210

PART NO.	DESCRIPTION
0647031	LED Solar Amber Flasher and Warning Light
0647041	LED Solar Red Flasher and Warning Light
0647071	LED Solar Amber Flasher and Warning Light with Mounting Kit
0647081	LED Solar Red Flasher and Warning Light with Mounting Kit

### PART ACCESSORIES

PART NO.	DESCRIPTION
8200491	Mounting kit for work lights



**BETALIGHT**  
when reliability really counts

www.betalight-tactical.com  
info@betalight.nl  
+31 - 341360111

# MILITARY LIGHTING SYSTEMS

At **Betalight B.V.**, our commitment to excellence extends beyond high-quality products; it embodies our prowess in illuminating military environments. Since 2004, our trajectory has been guided by a profound understanding of the unique demands of military settings and the future trends shaping shelter lighting. Right from the outset, our growth has been synonymous with meeting the evolving challenges specific to the military and shelter sectors.

Our customers relies on our extensive experience, tapping into our deep understanding of the market and our consolidated expertise from various lighting manufacturers. What sets us apart is our ability to deliver the complete lighting package—be it navigation lights, blackout lighting solutions, illumination for remote weapon stations, or tailor-made lighting solutions crafted for the specific needs of shelters. At Betalight B.V., we seamlessly integrate quality, expert consultancy, and a comprehensive range of lighting solutions, providing a distinctive competitive edge in the maritime and naval lighting landscape."

## **Military Standards (MIL-STD)**

Whether in use for civil or military operation many of our products have MIL-STD certification guaranteeing the products' have been designed and built to the most exacting requirements.

## **Advantages**

The lights are designed for both the retrofit and new build market and include normal visible, NVG Compatible, NVG Friendly and Covert technology. Solutions include infrared (IR) external lights and low profile interior cabin lighting and task lighting. All products are designed for the toughest military environments and offer a high MTBF, outstanding durability and EMC performance. The range includes visible and IR options and is suitable for all types of military Shelters

## **OEM**

Technology is constantly evolving. Our attitude towards design remains constant. Relentless innovation and smart partnerships make Betalight b.v. the reliable partner who invests in the design and science of Shelter lighting.

## **IR lighting:**

The IR Illuminators are optimal for various covert operations, like driving with NVG (Night Vision Goggles). It is perfectly suited to support an IR vision enhancement camera system or to be used to illuminate areas for high performance sensor systems like pan-tilt units or for helicopter operations. Our IR lights are made to increase the operational capabilities for a multitude of nighttime operations while maintaining a very low detectability.





BETALIGHT  
when reliability really counts

TACTICAL

# MILITARY LIGHTING SYSTEMS

MILITARY CATALOGUE



SCAN ME

[www.betalight-tactical.com](http://www.betalight-tactical.com)  
[info@betalight-tactical.com](mailto:info@betalight-tactical.com)

0031 - 341360111